



# INDU-SCAN base

## The Industrial Monitoring Solution

### Advantages at a Glance:

- Easy installation and assembly
- Cost-effective and reliable basic automation solution
- Modular system with up to three infrared cameras
- Convenient parameterisation due to separation of infrared camera and control unit
- Extensive data logging and file organisation provides easy access to event information for further analysis
- Well-proven high-performance industrial components for long-lasting and reliable use
- Professional consultancy and validation beforehand by our InfraTec application engineers
- High investment protection due to expandability of hardware components and range of functions as required
- System can be upgraded by InfraTec's engineering team for more cameras, accessories and functions

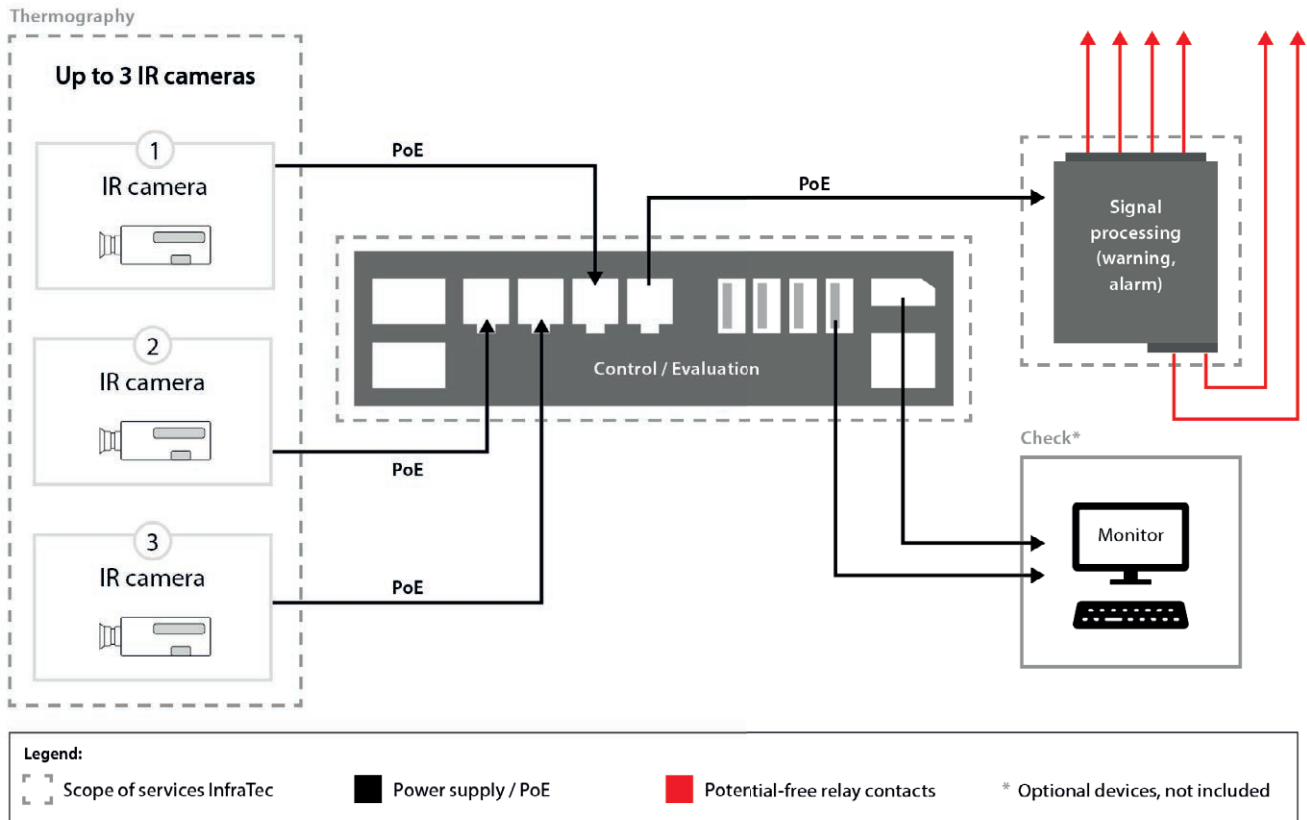
With INDU-SCAN base, InfraTec offers an entry into the segment of automated thermography: a cost-effective system solution for reliable 24/7 use in industry, for example for monitoring production processes or as the core of an OEM solution.

### The basic package includes:

- An choice of up to three high-performance thermographic cameras type VarioCAM® HD or TarisIR® mini
- Thermographic automation software INDU-SCAN base
- Powerful and well-proven industrial PC technology
- Professional consultancy on measurement and inspection tasks and the reliable InfraTec service

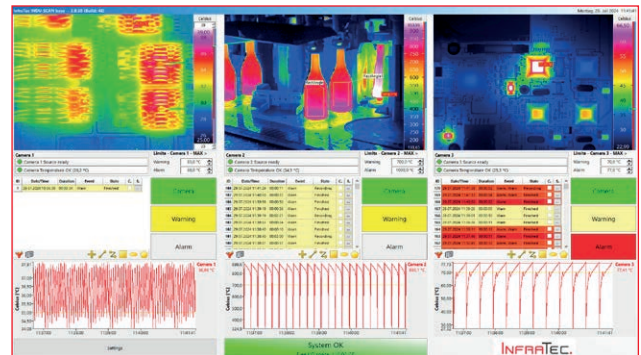
This flexible automation solution allows easy integration of infrared cameras from the range of InfraTec products in different performance classes. Thus, technical properties such as resolution and frame rate as well as lenses can be customised to the requirements of the respective measurement or inspection task. INDU-SCAN base, the user-friendly and industry-proven thermographic automation software, allows for remote camera control as well as a structured display of the live images from all IR cameras and the chronological progression of the generated measurement data. It is possible to define warning and alarm temperatures in the system for up to three cameras simultaneously and to transfer digital output signals to the production line.

## System Structure



## High-performance Software

- Flexible integration into the local system architecture via standard industry interfaces
- Clear presentation of the results of the test areas defined by the user
- Reliable warning and alarm triggering at preset limit values
- System configuration for single or multi-camera systems
- Display of camera and system status
- Temperature-time curves
- Event logging
- Archiving of the generated image data



Display of generated measurement data from up to three infrared cameras with INDU-SCAN base software

## Industry-proven Hardware

- Designed for reliable 24/7 operation
- High-performance IR cameras with high spatial resolution and thermal sensitivity
- Precise analysis of the measurement results due to high detail sharpness of the thermographic image data
- Versatile application options for localising heat sources
- Real-time data acquisition by fast and efficient data transmission via Gigabit Ethernet

## Applications

- Industrial plants and machine monitoring
- Fire protection and safety monitoring
- Energy supply and distribution
- Transport and logistics
- Environmental protection and nature conservation

Picture credits: © AdobeStock.com: industrieblick, Fotolia.com: industrieblick  
 © InfraTec 09/2024 (All stated product names and trademarks remain in property of their respective owners.) Design, specification and technical progress subject to change without prior notice.



Headquarters  
 InfraTec GmbH  
 Infrarotsensorik und Messtechnik  
 Gostritzer Straße 61 – 63  
 01217 Dresden / GERMANY

Phone +49 351 82876-610  
 E-mail thermo@InfraTec.de  
[www.InfraTec.eu](http://www.InfraTec.eu)

USA office  
 InfraTec infrared LLC  
 Phone +1 844-226-3722 (toll free)  
 E-mail thermo@InfraTec-infrared.com  
[www.InfraTec-infrared.com](http://www.InfraTec-infrared.com)