

IRBIS® 3 report

Time-efficient Preparation of Extensive Thermography Reports



With the thermography report software IRBIS® 3 report users can edit a large number of different thermal images within a very short time and prepare professional thermography reports. Corresponding report templates can be adapted to fit individual needs and ensure efficient working. An extensive range of analysis tools support the convenient recording and analysis of the measurement scenarios. Thus, IRBIS® 3 report meets the widest possible range of demands. Thermographers who routinely analyse thermal images also obtain a useful tool as well as users who want to represent complex automation processes with a minimum amount of time and effort.

Your Benefits from the Software

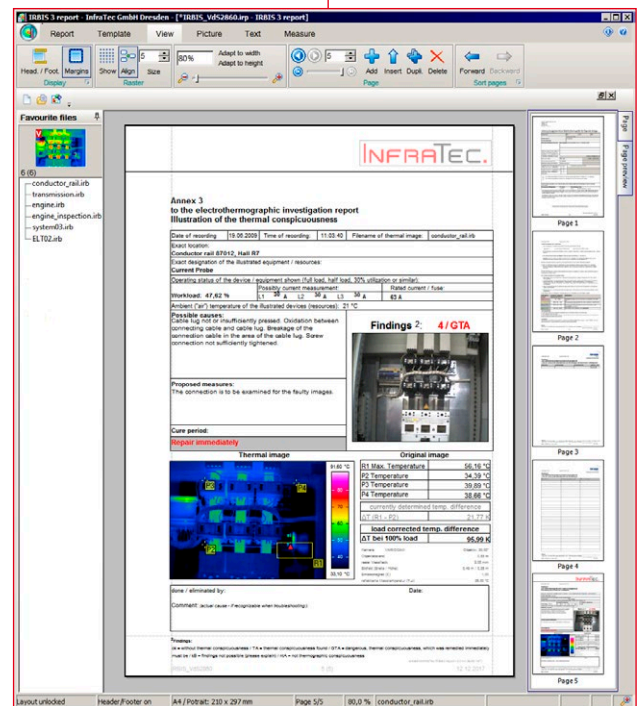
- Prepare thermography reports professionally
- Display the subsequent output view already during the editing of the document
- Create and change serial reports quickly
- Embed thermal images automatically
- Generate tables of contents, charts and parameter compilations
- Use multiple evaluation and correction functions
- Prepare calculations with formula editor that are applied to all reports
- Edit up to four thermography reports in multiple windows concurrently
- Work conveniently with data formats of all camera types in the InfraTec range



IRBIS® 3 report offers flexible options for exporting thermography reports

Just a Few Steps to the Complete Thermography Report

- Document large data volumes in PDF or Word format, amongst others
- Export all thermal data as well as selected display settings
- Additionally add temperature scale as well as measurement areas, correction areas and captions to thermal images
- Select from multiple VdS-compliant templates
- Simply prepare your own report templates
- Insert template elements, such as photos, text boxes, graphic elements, charts, tables etc. anywhere in the report
- Easily assimilate recurring comments and evaluation criteria



Use your own report templates or templates according to VdS standard to conveniently prepare extensive thermography reports



Easy data transfer via IRBIS® 3 report

Headquarters

InfraTec GmbH
Infrarotsensorik und Messtechnik
Gostritzer Straße 61 – 63
01217 Dresden / GERMANY

Phone +49 351 871-8630
E-mail thermo@InfraTec.de
www.InfraTec.eu

USA office

InfraTec infrared LLC
Phone +1 844-226-3722 (toll free)
E-mail thermo@InfraTec-infrared.com
www.InfraTec-infrared.com

IRBIS® 3 report

Time-efficient Preparation of Extensive Thermography Reports

Complete Data Transfer and Integration

- Transfer camera parameters either automatically or manually
- Assimilate from data, such as recording date and time, audio commentary, file name as well as photos which are assigned to the thermal image
- Integrate palettes and isotherms

Analysis and Editing Functions

- Make use of all basic image processing, measurement and correction features from the IRBIS® 3 software range
- Change global radiation properties of a thermal image and define its temperature range
- Utilise various measurement definitions (measuring points, lines and areas) within the thermal image and represent them in associated measurement tables
- Represent minimum, maximum and average values of all columns of a thermal image in charts
- Display a histogram of the frequency distribution of temperature values for the entire thermal image or recorded ROI
- Change and enhance finished reports retrospectively

Editable Formula Editor

- Back up your own calculation formulas, mathematic functions and logical instructions in a separate file
- Use all stored formulas as placeholders in all reports

Editable Comment Database

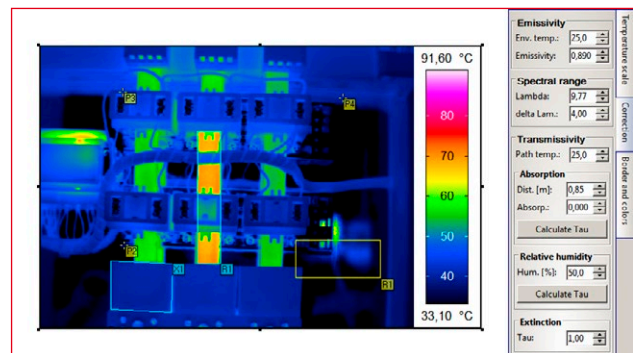
- Integrate your own comments in the comment database and assign them to the thermal images
- Use comments as formulas, table of contents or placeholders in texts
- Import comments assigned to a thermal image with the VarioCAM® High Definition camera series automatically to the comment database

InfraTec
just ask the specialists

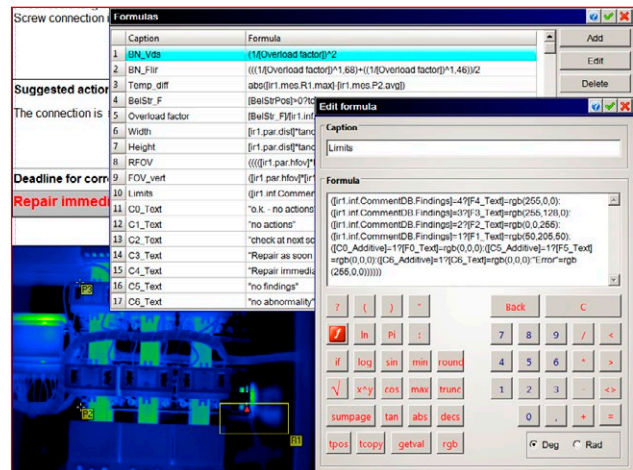
Annex 1
to the electrothermographic investigation report
List of investigated equipment and facilities with thermal abnormalities

Location	Equipment	Resources	Findings	Page
Trafostation PW4	Comp. A4	K4	2 / ta	6
Coating plant	Heater Gr. 33	=33-V31	2 / ta	7
Coating plant	Heater Gr. 33	=33-V33	2 / ta	8
Coating plant	Heater Gr. 36	=36-V31	2 / ta	9
PW4 packaging	=A1+N1	4Q1	3 / ta	10
PW4 AFK	VBA	Circuit breaker F43	4 / gta	11
PW4 residue pressing	=ABA+ES002	-K265 / -K266	4 / gta	12
PW4 residue pressing	=ABA +ES002	K265, K266	k.B.	13

Stored measurement definitions can be edited directly in the IRBIS® 3 report



Changing global radiation properties



Storing your own formulas and comments for use in all reports